

Track, Manage, and Report on Daily Job Site Activity



Data:Maxx™

Data:Maxx DAILY REPORT™

DataMaxx V6 Daily Report

Daily Report Report Date: Monday, September 22, 2008
 Supervisor: Rikie Marquez
 Job: 5R46525

Buttons: New, Submit, Saved Emp List, Manage Columns, Add Div 17 Cost Code, Setup, Saved Equip List, Add Div 18 Cost Code, Print Grid, Export Grid

Tabs: Labor, Equipment, Quantities, Subcontractors, Work, Materials, Weather, Notes

Labor

Approved	Emp ID	Name	Total to Allocate	Reg	OT	DT	Reg	OT	DT	Reg	CT
<input type="checkbox"/>	167	AKINS, JOSEPH	10		8	2					
<input type="checkbox"/>	699	ALANIA, MARIA	8					4			4
<input type="checkbox"/>	1007	ALDERMAN, RONNIE	7		6						
<input type="checkbox"/>	287	TAMFS, ARNOLD	6		4			4			
<input type="checkbox"/>	696	RAFABEL BACA	7.5								6

Summary: 18 Reg, 2 OT, 0 DT, 8 Reg, 0 OT, 0 DT, 0 CT

Buttons: Check/Uncheck All, Save Emp IDs, Print Daily Reports

Sample Labor Panel (left) and Sub-contractor Panel (below)

DataMaxx V6 Daily Report

Daily Report Report Date: Wednesday, September 17, 2008
 Supervisor: Rikie Marquez
 Job: 5SL1007

Buttons: New, Submit, Saved Emp List, Saved Equip List: Job 1800, Setup, Print Grid, Export Grid

Tabs: Labor, Equipment, Quantities, Subcontractors, Work, Materials, Weather, Notes

Subcontractor Issues

Subcontractor...	No. of...	Describe Work Performed and List Critical Material Received by Subs	Subcontractor Issues
ABC Interior Finis...	15	Metal Studs	
ABC Interior Finis...	15	Hang board	
DFS Flooring	9	Ceramic Tile	

Now, you can run your business with accurate daily information - not just "guess-timates". Know what's happening day-to-day on any given project! Record daily events and provide an overview of activities and conditions that will help you manage any project site successfully.

Get access to critical information such as:

- Labor,
- Equipment (used and idle),
- Quantities placed,
- Material used and delivered,
- Subcontractor work force, work performed, and critical issues,
- On-site weather conditions,
- Job impacts,
- Extra work performed,
- List submittals, clarifications, or RFIs,
- Describe meetings held,
- List safety meetings and inspections,
- Work performed,
- Free form notes.

The Daily Report gives you these powerful hands-on features:

- Easy distribution of Regular time, Overtime, Sick-pay, Vacation, Holiday, and Double-time by field supervisors,
- Instant displays of vital work force information such as Default Union, Territory, Trade, Class code, Pay rate, Home office, Work type, and State worked, with the ability to change if necessary,
- A choice of inputting hours manually or calculating hours worked from Time-in/Time-out data. Also allows you to calculate the Time-out from Time-in/input of hours,
- Quick and simple Time Sheet printing from entry screen,
- Fully customizable entry screens to match your current time sheets.
- Fast and accurate recording of Per diem, Vehicle allowances, Subsistence, Orientation, Travel miles, PTO, and Work type,
- The ability to link and record Equipment/Operator relationships,
- Equipment, Job, Phases, and Cost codes brought in automatically from your accounting package,
- Automatic calculation of Equipment idle time based on equipment that was on the job but not used,
- The distribution of hours and equipment to Jobs/Phases/Cost codes with green color-coding to visually indicate that time is fully distributed, and the automatic distribution of equipment based on Jobs/Phases/Cost codes worked on that day,
- The ability to automatically send Labor, Equipment hours, and Quantities to your accounting package. Check with your Data Maxx representative for specific details on integration with your accounting package.

Data-Maxx.
9990 Coconut Road
Bonita Springs, FL 34113

888-995-0184 toll-free
239-236-0276 fax

www.data-maxx.com
email: sales@data-maxx.net



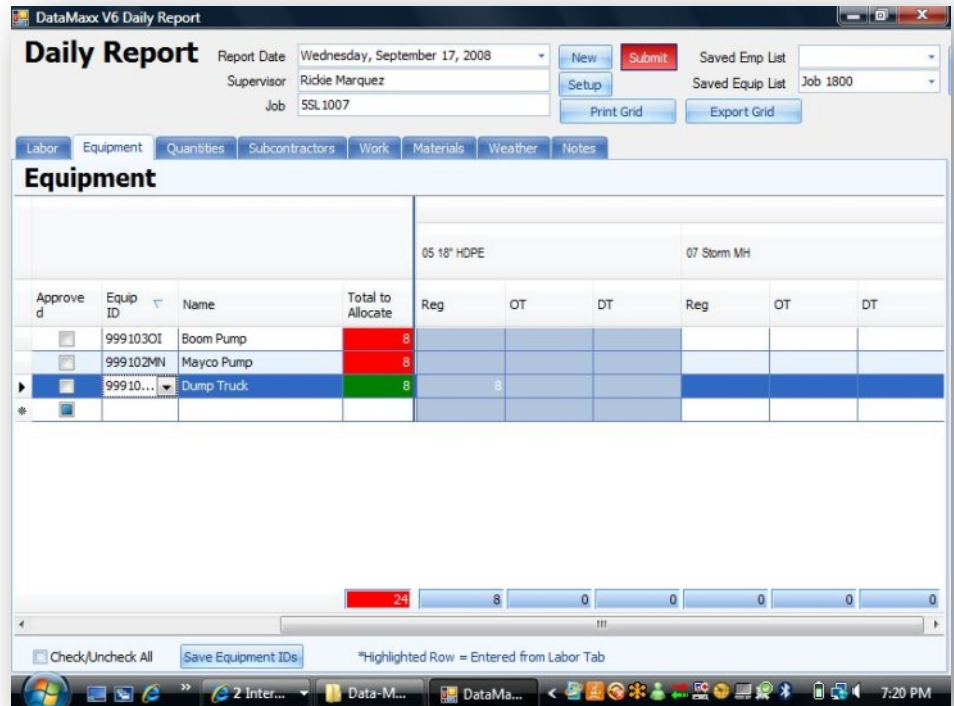
Call 888-995-0184 Today

For more information, call your Data-Maxx Business Consultant today.

You can also visit us online at www.data-maxx.com

© Copyright 2012 Data:Maxx. All rights reserved. Specifications and pricing are subject to change without notice. rev: dm_dlyrpt_1008.cdr

- Saved scroll-down lists that allow you to easily view and select items such as crews and equipment-on-the-job,
- Printing capability from any entry screen allows quick access to hard copies for handy field reference,
- Controls ensuring that Jobs/Phases/Cost codes are not left blank for validation and integration of time back to accounting system.



Sample Equipment Panel (above)

- Supports disconnected state - no server connection
- Email notification by job
- User definable absence reasons
- User definable equipment idle reasons
- User definable weather
- Support digital signature capture