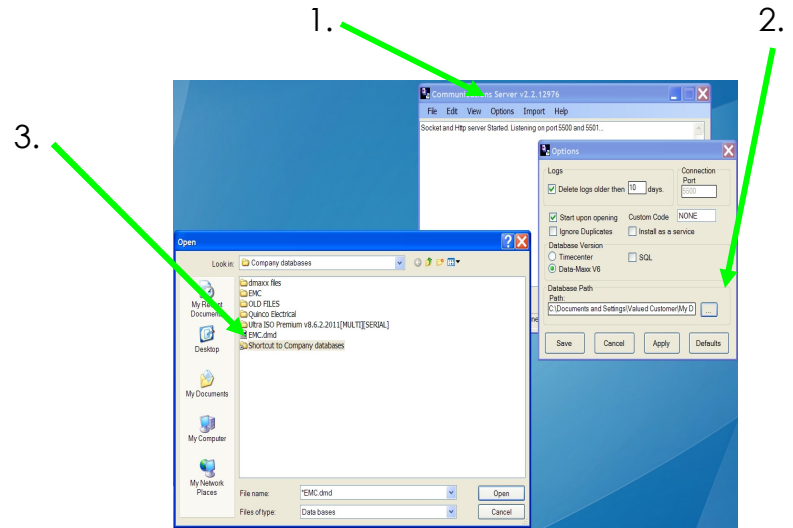


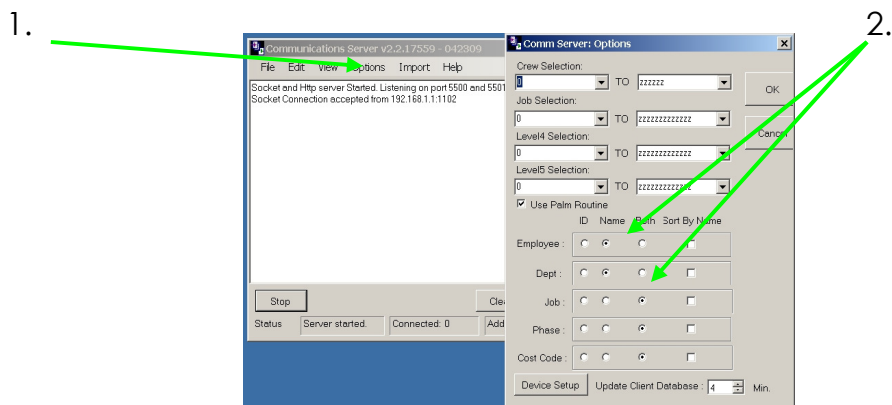
Data=Maxx™

How to Use the CommServer Software

1. Connect to the proper Database (.dmd file) by choosing Options and the browsing for the proper file. Make sure Start upon Opening is Checked.



2. You can change how you want your data to appear on you devices by choosing View then Advanced. In the advanced pop up window you can configure all the settings. Click Ok when you are finished



3. The CommServer is now set. It should say Socket and Http server Started. Listening to port 5500 and 5501. If you do not see this you can close and restart the software.